

Product Sheet

H_BDCA2 HEK-293 Cell Line

Catalog number: GM-C13222

Version 3.3.1.241203

| | |
|------------------------------|---|
| Description | H_BDCA2 HEK-293 Cell Line is a clonal stable HEK-293 cell line that constitutively expresses the human BDCA2 and human FCER1G genes, constructed using lentiviral technology. |
| Quantity | 5E6 Cells per vial, 1 mL |
| Product Format | 1 vial of frozen cells |
| Shipping | Shipped on dry ice |
| Storage Conditions | Liquid nitrogen immediately upon receipt |
| Target | Human_BDCA2 & Human_FCER1G |
| Gene ID/Uniprot ID | Q8WTT0-1 & P30273 |
| Host Cell | HEK-293 |
| Recovery Medium | DMEM +10% FBS+1% P.S |
| Growth medium | DMEM++10% FBS+1% P.S+400 µg/mL G418+0.75 µg/ml Puromycin |
| Note | None |
| Freezing Medium | 90% FBS+10% DMSO |
| Growth properties | Adherent |
| Growth Conditions | 37°C, 5% CO ₂ |
| Mycoplasma Testing | The cell line has been screened to confirm the absence of Mycoplasma species. |
| Safety considerations | Biosafety Level 2 |
| Note | It is recommended to expand the cell culture and store a minimum of 10 vials at an early passage for potential future use. |

Materials

| Reagent | Manufacturer/Catalogue No. |
|--|-----------------------------|
| DMEM | Gibco/C11995500BT |
| Fetal Bovine Serum | Cegrogen biotech/A0500-3010 |
| Pen/Strep | Thermo/15140-122 |
| G418 | Genomeditech/GM-040402 |
| Puromycin | Genomeditech/GM-040401 |
| Anti-H_BDCA2 hIgG1 Antibody(Litifilimab) | Genomeditech/GM-31294AB |

Figures

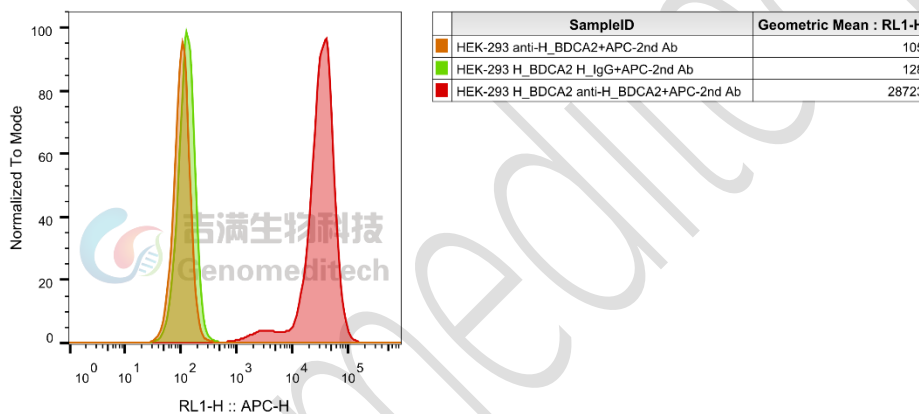


Figure 1 | H_BDCA2 HEK-293 Cell Line (Cat. GM-C13222) was determined by flow cytometry using Anti-H_BDCA2 hIgG1 Antibody(litifilimab) (Cat. [GM-31294AB](#)).

Cell Recovery

Recovery Medium: DMEM +10% FBS+1% P.S

To insure the highest level of viability, thaw the vial and initiate the culture as soon as possible upon receipt. If upon arrival, continued storage of the frozen culture is necessary, it should be stored in liquid nitrogen vapor phase and not at -70°C. Storage at -70°C will result in loss of viability.

- Thaw the vial by gentle agitation in a 37°C water bath. To reduce the possibility of contamination, keep the O-ring and cap out of the water. Thawing should be rapid (approximately 2 - 3 minutes).
- Remove the vial from the water bath as soon as the contents are thawed, and decontaminate by dipping in or spraying with 70% ethanol. All of the operations from this point on should be carried out under strict aseptic conditions.
- Transfer the vial contents to a centrifuge tube containing 5.0 mL complete culture medium and spin at approximately 176 x g for 5 minutes. Discard supernatant.

- d) Resuspend cell pellet with the recommended recovery medium. And dispense into appropriate culture dishes.
- e) Incubate the culture at 37°C in a suitable incubator. A 5% CO₂ in air atmosphere is recommended if using the medium described on this product sheet.

Cell Freezing

Freezing Medium: 90% FBS+10% DMSO

- a) Centrifuge at 176 x g for 3 minutes to collect cells.
- b) Resuspend the cells in pre-cooled freezing medium and adjust the cell density to 5E6 cells/mL.
- c) Aliquot 1 mL into each vial.
- d) Place the vial in a controlled-rate freezing container and store at -80°C for at least 1 day, then transfer to liquid nitrogen as soon as possible.

Cell passage

Growth medium: DMEM++10% FBS+1% P.S+400 µg/mL G418+0.75 µg/ml Puromycin

For the first 1 to 2 passages post-resuscitation, use the recovery medium. Once the cells have stabilized, switch to a growth medium.

- a) Subculturing is necessary when the cell density reaches 80%. It is recommended to perform subculturing at a ratio of 1:3 to 1:4 every 2-3 days. Ensure that the density does not exceed 80%, as overcrowding can lead to reduced viability due to compression.
- b) Remove and discard culture medium.
- c) Briefly rinse the cell layer with PBS to remove all traces of serum that contains trypsin inhibitor.
- d) Add 1.0 mL of 0.25% (w/v) Trypsin-EDTA solution to dish and observe cells under an inverted microscope until cell layer is dispersed (usually within 30 to 60 seconds at 37°C).
- e) Note: To avoid clumping do not agitate the cells by hitting or shaking the flask while waiting for the cells to detach. Cells that are difficult to detach may be placed at 37°C to facilitate dispersal.
- f) Add 2.0 mL of growth medium to mix well and aspirate cells by gently pipetting.
- g) After centrifugation, resuspend the pellet and add appropriate aliquots of the cell suspension to new culture vessels.
- h) Incubate cultures at 37°C.

Subcultivation Ratio: A subcultivation ratio of 1:3 - 1:4 is recommended

Medium Renewal: Every 2 to 3 days

Notes

- a) Upon initial thawing, a higher number of dead cells is observed, which is a normal phenomenon. Significant improvement is seen after adaptation. Once the cells reach a stable state, the number of dead cells decreases after subculturing and the cell growth rate becomes stable.
- b) Ensure that the cell density does not exceed 80%, as overcrowding may lead to reduced viability due to compression.

Sequence

CLEC4C(BDCA2) [Q8WTT0-1](#)

MVPEEPPQDREKGLWWFQLKVWSMAVVSILLLSVCFTVSSVVPHPNFMYSKTVKRLSKLREYQQYHPSLTCV
 MEGKDIEDWSSCPTPWTSFQSSCYFISTGMQSWTKSQKNCSSVMGADLVVINTREEQDFIQLNKRNSSYFLGL
 SDPGRRHWQWVDQTPYNENVTFWHSGEPPNLDERCAIINFRSSEEWGWNDIHCHVPQKSICKMKKIYI

FCER1G [P30273](#)

MIPAVVLLLLLLVEQAAALGEPQLCYILDAILFLYGIVLTLTYCRLKIQVRKAAITSYEKSDGVYTGGLSTRNQE
 TYETLKHEKPPQ

Related Products

| CD40: CD40L | |
|---|--|
| H_CD40(TNFRSF5) Reporter 293 Cell Line | H_CD40(TNFRSF5) Reporter Jurkat Cell Line |
| Cynomolgus_CD40 CHO-K1 Cell Line | Cynomolgus_CD40L CHO-K1 Cell Line |
| H_CD40(TNFRSF5) CHO-K1 Cell Line | H_CD40(TNFRSF5) HEK-293 Cell Line |
| H_CD40L CHO-K1 Cell Line | H_CD40L HEK-293 Cell Line |
| Anti-H_CD40 hIgG1 Antibody(APX005M) | Anti-H_CD40 hIgG1 Antibody(ravagalimab) |
| Anti-H_CD40L hIgG1 Antibody(dapirolizumab) | Anti-H_CD40L hIgG1 Antibody(frexalimab) |
| Biotinylated Human CD40 Protein; His-Avi Tag | Cynomolgus CD40 Protein; His Tag |
| Human CD40 Protein; His Tag | Human CD40L Protein; His Tag |
| IFN- α | |
| IFNα Reporter HEK-293 Cell Line | IFNα Reporter MDCK Cell Line |
| IFNα Reporter THP1 Cell Line | |
| BCMA:BAFFR:TACI | |
| H_BAFFR Reporter Cell Line | H_BCMA Reporter Cell Line |
| H_TACI Reporter Cell Line | Cynomolgus_BCMA CHO-K1 Cell Line |
| H_BCMA CHO-K1 Cell Line | H_BCMA HEK-293 Cell Line |
| Anti-BAFF hIgG1 Antibody(belimumab) | Anti-BAFFR hIgG1 Antibody(ianalumab) |
| Anti-BCMA hIgG1 Antibody(Belantamab) | Anti-BCMA hIgG1 Antibody(SEA-BCMA) |
| Anti-BCMA hIgG4 Antibody(BCMB69) | |
| Biotinylated Human BAFF Protein; His-Avi Tag | Cynomolgus BAFF Protein; His Tag |
| Human BAFF Protein; His Tag | Mouse BAFF Protein; His Tag |
| BDCA2(CLEC4C) | |
| H_BDCA2 Reporter Jurkat Cell Line | Cynomolgus_BDCA2 CHO-K1 Cell Line |
| Cynomolgus_BDCA2 Jurkat Cell Line | H_BDCA2 CHO-K1 Cell Line |
| H_BDCA2 Jurkat Cell Line | |
| Anti-H_BDCA2 hIgG1 Antibody(Litifilimab) | |
| Cynomolgus BDCA2 Protein; His Tag | Human BDCA2 Protein; His Tag |

Limited Use License Agreement

Genomeditech (Shanghai) Co., Ltd grants to the Licensee all intellectual property rights, exclusive, non-transferable, and non-sublicensable rights of the Licensed Materials; Genomeditech (Shanghai) Co., Ltd will retain ownership of the Licensed Materials, cell line history packages, progeny, and the Licensed Materials including modified materials.

Between Genomeditech (Shanghai) Co., Ltd, and Licensee, Licensee is not permitted to modify cell lines in any way. The Licensee shall not share, distribute, sell, sublicense, or otherwise provide the Licensed Materials, or progenitors to third parties such as laboratories, departments, research institutions, hospitals, universities, or biotechnology companies for use other than for the purpose of outsourcing the Licensee's research.

Please refer to the Genomeditech Cell Line License Agreement for details.

Genomeditech